

USER MANUAL



DUAL CHAMBER VACUUM PACKING MACHINE

MODEL: 09300228

READ THIS MANUAL CAREFULLY BEFORE USING



TABLE OF CONTENTS

1. PREFACE	6
1.1 Introduction.....	6
1.2 General information.....	6
1.3 Warranty.....	6
2. PRODUCT INFORMATION	7
2.1 Intended use.....	7
2.2 Specifications.....	7
2.3 Usage	7
2.4 Characteristics.....	7
4. PREPARATION BEFORE USE	8
4.1 Installation	8
4.2 Setting	8
5. OPERATION	9
5.1 Control Panel.....	9
5.2 Operation Instructions.....	9
5.2 Note.....	10
6. SPARE PARTS	10
7. FAQ	11
8. BREAKDOWN ANALYSIS	12
8.1 Vacuum pump and vacuum system	12
8.2 Breakdown of heating sealing	12
9. STORAGE	13
10. DISCARDING	13
APPENDIX: CIRCUIT DIAGRAM	14

SAFETY INSTRUCTIONS

- This appliance may only be used for its designed purpose. Neither the manufacturer nor the supplier are liable for damage caused by the incorrect use of this item.
- This is a commercial product that should only to be used by those who have read and fully understand this manual. It must not be used by children, or persons with reduced physical, sensory or mental capabilities without supervision.
- This device is intended for indoor use only.
- Keep the appliance and electrical plug away from water and other liquids. If either is exposed to a liquid, immediately disconnect the power supply and have the appliance checked by a certified technician. Not following these instructions may result in electric shock, or even death.
- Do not use the appliance after it has fallen or if is damaged in any way. Have it checked and repaired by a certified technician.
- Do not move the appliance while in operation and never move or carry the appliance by the power cord.
- Do not place or move the appliance on its side, upside-down or while tilted.
- Do not open the casing or try to repair the appliance yourself, unless instructed to by a Maxima technician. This may void the warranty, cause damage to the machine or result in a hazardous situation.
- Do not use any devices or accessories that are not supplied with the appliance or designed to work with it.
- Never put your hands or other body parts near the moving parts of the appliance while operational and always keep an eye on the appliance when in use.
- Do not insert objects in the casing or openings of the appliance.

- Avoid overloading the appliance.
- Keep all packaging away from children and dispose of packaging in accordance with local and national regulations.
- The electrical installation must comply with local regulations.
- Switch off the appliance before removing the power plug.
- Always disconnect the power supply when the appliance is not in use. To remove the plug from the socket, always pull the plug itself and not the cable.
- Do not touch the power plug with damp or wet hands.
- Keep the power cable away from the range of operation and do not cover the cable. Make sure the power cable does not come in contact with hot or sharp objects and keep it away from open flames.
- Note that while the plug is in the electrical socket, the appliance is connected to the electrical grid.

SAFETY SYMBOLS



- Store product between 10-30°C
- Avoid placement in direct sunlight
- Product intended for indoor use
- Double electrical insulation: does not require grounding/earth connections
- Product disposal according to local waste regulations
- Product meets CE requirements

1. PREFACE

1.1 Introduction

Thank you for purchasing this product from Maxima. To ensure your own safety and to get the best out of your purchase, please read the instructions carefully before attempting to install or use this product. This manual should be available at all times and stored near the appliance.

All Maxima products are CE certified. Our products meet the legal requirements regarding health, safety and the environment, as set out by the European Commission. In addition, all products are thoroughly tested prior to shipment to ensure product quality and safety.

1.2 General information

For after sales support, please visit our Customer Service page at: www.maxima.com/en/service. User manuals are available online and can be downloaded electronically from the product's page on our website. If the manual for your product is not available, please contact Customer Service. For more information, visit our website: www.maxima.com

1.3 Warranty

We offer a 12-month warranty from the date of purchase, as indicated on your purchase invoice. Under the warranty, we will deliver additional spare parts in case of: material defects, manufacturing defects or other quality issues.

The following is not covered by the warranty:

- Damage relating to the incorrect use of the product
- Damage relating to use of parts that were not part of the original machine
- Damage due to transport to another location after delivery, or incorrect installation and connection
- Component damage caused by incorrect electrical or water connection
- Damage as a result of disassembly and/or modification to the original machine without permission
- Damage as a result of misuse, poor cleaning or improper maintenance
- Damage as a result of fire, building collapse, lightning, flooding, power surges or vermin
- Failure to read or follow the user manual
- Consumables and parts prone to wear and tear
- An altered invoice or no invoice

2. PRODUCT INFORMATION

2.1 Intended use

This appliance may only be used for the purpose for which it was designed and intended. The manufacturer and supplier are not liable for any damage caused by incorrect operation and improper use.

This is a commercial product that must only be used by a trained professional who has read and understands this manual. It must not be used by children or persons with reduced capabilities without supervision.

2.2 Specifications

DUAL CHAMBER VACUUM PACKING MACHINE			
Article Code	Chamber Size (mm)	Sealing Size (mm)	Pump (m ³ /h)
09300228	760 x 590 x 160	600 x 8 x 2	2 x 20

2.3 Usage

For double chamber vacuum packaging machine, a vacuum cover operates alternatively cover the two vacuum chambers so as to improve working efficiency. When one of them is being vacuuming, the other may used to accommodate contents. It has character of Easy operation, Easy maintenance, User friendly and also to cope with wide range application. Especially suitable for soft packing material such as complex film, aluminum-foil complex film etc.

It can also pack products in vacuum form or inserting gas after vacuum form to solid, powder and even liquid, paste, seed, fragrant article, medicine, chemical, electronic, precision instrument, meter and rare expensive metal etc.

The articles packed in vacuum condition ensure to the quality and freshness for a longer period as it can prevent oxidation, mildew, moth, rotten and damp, vacuum machine have different working environment.

2.4 Characteristics

This machine is user friendly. From the flow chart : Close the machine cover, air exhaustion (vacuum), gas filling, heating, sealing, label printing, cooling, return-air, to the re- opening of cover, the whole processing is done automatically.

The sealing temperature and sealing time can be set flexibly with a wide adjustable range so as to suit various packing bags with different materials and specifications.

This machine is equipped with safe grounding protection and E-Stop Button protection to deal with sudden accident. The E-Stop Button can be pressed to stop packing procedure immediately if there is any emergency arisen during processing.

4. PREPARATION BEFORE USE

4.1 Installation

- Before operation, please read through the Instruction Manual about each operation rules and the safety precaution
- You must fill the vacuum pump with NO.68 or NO.100 vacuum pump oil before use (When the machine is placed at a horizontal position, the oil level should keep at 1/2-1/3 of oil window.) When running, the oil level should not be lower than 1/3 height of oil window. Do not fill with too much oil to avoid over flow.
- The machine should be placed horizontally in good ventilation without corrosive gas and heavy dust.
- The power connection position maybe located at different side, so be sure to do grounding protection before use.
- Always ensure top cover is open before turning the power on. Start the machine by pressing the top cover and the process start automatically. (For Electric cover series, turn on the power supply and the top cover will automatically open. By pressing the Start button which located near the control panel will start the process cycle.) For 3-phase vacuum machinery, please be sure the vacuum pump is running in correct direction. If the direction is wrong, simply switch the phase of the power.
- Preheat of vacuum pump must be done in low temperature working area. Turn off the heater selection switch at the control panel to off position. This is to prevent heating process and cut down wear and tear losses. Run the vacuum pump a few time and machine will be ready to use.

4.2 Setting

- Please set every parameter firstly before starting machine.
- Turn on the power supply, check through the setting shows on the panel and make sure “→” must be shown after setting is done. Otherwise, operation of this machine cannot be function if the setting is not on this mode.
- Press the setting button, the indicator lamp of vacuum lights to enter into the setting state of vacuum timing. Press the upward or downward key to increase or decrease vacuum time in the range of 0~99 seconds.
- After the vacuum time is set, press the set key and the nitrogen filling indicator lamp lights to enter into the setting state of nitrogen filling. Press the upward or downward key to increase or decrease nitrogen filling time in the range of 0~99 seconds. **Note: Some models of our machine do not have nitrogen filling function, So after setting the vacuum time, it enter sealing time directly.**
- Press the parameter set key, heating indicator lamp lights to enter into heating setting state. Press the upward or downward key to increase or decrease the heating sealing time in the range of 0~3.5 seconds. The time setting should be from low timing and gradually to higher timings.
- After the heating time is set, press the set key again, cooling indicator lamp lights to enter into the setting state of cooling time in the range of 0~9.9 seconds.
- After the cooling time is set, press the set key again to finish the parameter setting, and “Ed” is shown in panel.
- Press the “temperature selection” set key to enter into temperature set state. Press the set key once, indicate one corresponding temperature value, and the lamp shows orange color; there are three selections such as “high temperature”, “middle temperature” and “low temperature”. For a special requirement, please contact the equipment manufacturer.

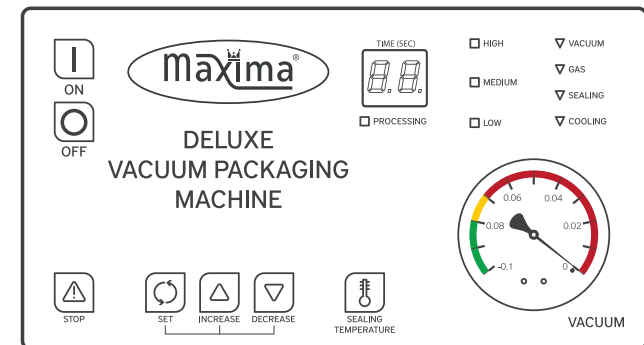
- **i** Remarks & Tips: Ways to fast process of vacuum a small item or product using a bigger chamber is to place a solid block into the chamber as to occupy the chamber space so as to allow less vacuum time needed due to compact space. You can buy the PP board as solid block from us.

⚠ IMPORTANT : * DO NOT BLOCK THE AIR HOLE IN THE CHAMBER*****

5. OPERATION

5.1 Control Panel

- Two sizes of the PC type control panel are available upon customer’s request. The big control panel offers three control modes :
- In case of emergency arising during the operation of the machine, the machine stops all operations and open the vacuum cover once the emergency stop button is pressed.
- When the emergency stop button is pressed, the machine will immediately stop the running program and proceed with the next procedure by memory until cooling down and opening of the vacuum cover after sealing. For a vacuum pumping and proceeds with inflating – cooling down – sealing and cover opening procedures.
- PC control panel with ten groups of memories : The control panel provides the above two control functions as well as ten different groups of memories of control program for user’s free selection in operation.



5.2 Operation Instructions

- Turn on the power supply and select a suitable vacuum packing bag for the product.
- Set the processing parameter and select the sealing temperature.
- Place the vacuum bag at the chamber with the opening end on top of the sealing bar. Clamp it with the hook provided.
- Close the acrylic cover and the machine will complete the processing procedure automatically.
- During processing, the vacuum chamber will form a vacuum self-lock state, the whole heating and sealing procedure are completed in a vacuum environment, and the LED display on panel shows the flow process.

- When the vacuum indicator on panel lights, the equipment is under vacuum state, the LED display shows the timing of vacuum time, and it will enter into the next work state automatically after the timing is finished.
- When the nitrogen filling indicator on panel lights, the equipment is under filling state, the LED display shows the reverse timing of filling time, and it will enter into the next work state automatically after the reverse timing is finished.
- When heating indicator lights, the equipment enters into heating work state, and the panel shows the reverse timing of heating. It will enter into cooling state automatically after the timing is finished.
- According to time setting, the machine doesn't act when cooling, the panel shows "□□" till the reverse timing is finished, air is returned, the cover opens automatically, and the whole processing is finished. Then prepare the next cycle.
- Press the E-Stop Button for a sudden condition under processing state, the machine will go to return-air action automatically, the cover opens automatically after return-air action, so the processing ends.

5.2 Note

- Silicone rubber strip come with one side nerving and the other for letter and number inserting. It will have embossed effect on sealing surface.
- Please do not run the machine without any vacuum bag attach. Otherwise, the heating element will have higher wear and tear.
- Cut off the power supply and pull out external plug when no use.
- The vacuum gauge/meter reading may be different due to different area. At high altitude, the data in vacuum meter goes down.
- Please adopt suitable cooling measure when processing is done in a high temperature occasion.
- Please use the vacuum bag whose material does not bring any poisonous gas in the sealing.
- The machine should be placed horizontally in the transportation, the inversion is not allowed. The transportation must be proceeded strictly according to the instructing marks on the shipping case.
- The machine should be stored in dry, ventilated, normal temperature place.
- Mind your head when the lid open, avoid the lid striking your head.
- Please ask the professional to solve the problem, do not do some repair works by yourself.
- The spare parts should match our machine in the replacement.

6. SPARE PARTS

Spare parts available in the service pack for each machine Sealing Cloth, Heating Wire, Gasket, Oil, Oil Filter Device.

7. FAQ

? Can this machine seal foil or laminated bags?

- Yes, it is designed to seal barrier laminations including laminations containing foils.

? How much longer will my products last?

- Typically shelf life may be extended three to five times. Results will vary, though, depending on the nature of the product, cleanliness, handling, temperature, and post packaging conditions, among others.

? What type of bag do I need to use?

- You need bags capable of offering a full gas barrier. Bags come in different sizes, and minimum order is typically only one thousand bags. Contact of us pricing the availability.

? What are the advantages of vacuum packaging my products? Extended shelf-life

- No Freezer burn
- No loss of volume or product weight due to evaporation Reduced action by aerobic bacteria
- Ease keeping control of inventory
- Cost-reduction due to volume purchasing of products to be packaged Capacity of producing in large batches
- Excellent product appearance
- Increased product safety from theft, vandalism and contamination Increase ease of product handling
- Improved product quality perception from clients and consumers

? How do these machines work?

- Turn on the power of machine; Set working parameter as vacuum time, heating time, cooling time, temperature; Put the packaging bag into the vacuum chamber, lay the bag mouth on the sealer; Close the lid, machine start working by itself; After a while, the lid open automatically when the working ends, take the bag out, it is ok.

? Can I vacuum pack liquids?

- Absolutely. Many clients use these machines to bag salsa, soups, broths, stocks, and/or consommés.

? Do you recommend any parts we should keep in stock?

- You should keep a few heating elements and teflon strips, as these have a limited life span. The machines come with a kit of spares, but keep an eye on how many you have left.

? If I vacuum package my food products, will I still need to refrigerate them?

- Yes, vacuum packaging is not a substitute to refrigeration.

? I need something faster than what you are offering here...

- We offer single and double chamber machines, equipped with single and double seal bars, and different chamber volumes; as well as fully automatic machines designed to cover the most rigorous productions schedules. Check our other listings or contact us for more information. We do not list all of our offerings.

8. BREAKDOWN ANALYSIS

8.1 Vacuum pump and vacuum system

PROBLEM	POSSIBLE CAUSE / SOLUTION	
Vacuum pump does not act, the possible reasons are as follows	Limit switch is not pressed on	Close the machine cover and adjust the limit switch.
		Adjust the pull-rod for electric cover opening machine.
	Time relay of vacuum pump is damaged.	Replace it.
	Dynamo of vacuum pump is damaged.	Replace it.
Vacuum chamber cannot reach the vacuum degree, the possible reasons are as follows:	Vacuum degree cannot be reached because vacuum pump is worn or damaged. Loose air pipe joint, broken pipe, damaged sealing ring of vacuum chamber or damaged solenoid valve causes the entry of air into vacuum chamber. Insufficient oil in vacuum pump. Vacuum timing is not enough.	
Vacuum chamber cannot be opened, the possible reasons are as follows:	Air-bleed solenoid valve is not turned on. For electric cover opening machine, the cover opening motor may be damaged, or pull-rod is jammed.	
Air remains in bag after processing is finished, the possible reasons are as follows:	Wrong position resting on sealing bar. -Redo it. Uneven sealing pressure bar presses the bag opening side so that air cannot escape.	
5Abnormal sound or tripping when running, black smoke or oil drop at air vent.	Abnormal sound of fan of pump motor, it should be repaired. Blockage may be seen in air intake and/or pipe. Insufficient oil of vacuum pump or the use of non-standard lubricant. Long-time running of pump or overheat running under high temperature, please keep the machine ventilated and heat radiated. Faulty vacuum pump motor or solenoid valve of vacuum pump or wear and tear due to usage. Replace parts or contact the manufacture factory.	

8.2 Breakdown of heating sealing

PROBLEM	POSSIBLE CAUSE / SOLUTION
Incapable sealing, the possible reasons are as follows:	The heating sealing selector switch is not selected and the heating power is not turned on. The heating element is damaged and the power connecting position of heating element is cut off. The heating time is set at "0". The heating time relay is damaged. The sealing solenoid valve does not act and gas bag does not bulge (or gas bag is damaged).

PROBLEM	POSSIBLE CAUSE / SOLUTION
Uneven sealing veins, air bubble or not firm sealing, the reasons are as follows:	Sealing rubber bar is unclean. Heating time is too short or temperature is too low. Sealing can't be pressed tightly caused by insufficient bulge of gas bag. Air bubble shrinks caused by insufficient cooling time. Heating sealing bar is damaged and the surface is not flat.

Note: The above breakdown analysis is only for reference. It's different for special model configuration, and here no additional instructions.

9. STORAGE

Roll the power cable up and store it safely. Make sure the appliance is thoroughly cleaned before storing it away. Store in a cool, dry place.

10. DISCARDING

When disposing of this appliance, please do so in compliance with local and national regulations. It's also important to dispose of any related materials correctly. This piece of equipment may contain packaging and accessories that have to be collected and disposed of separately. These should not be treated as unsorted municipal waste.

Recycling: By disposing of waste in the proper manner, you help avoid hazards in the environment that could be caused by improper treatment of waste.

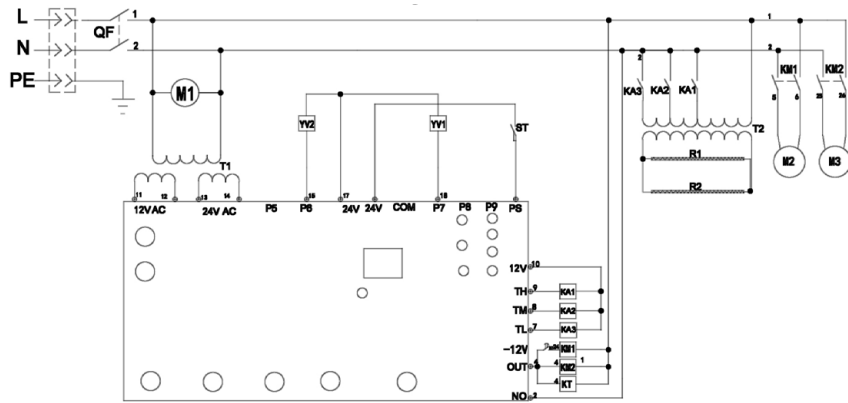
Packaging: The packaging is made from materials to be disposed of through local recycling facilities.

Batteries: If the machine contains a battery, these may contain toxic substances and are a hazard to the environment. Please dispose of used or rechargeable batteries responsibly through a local collection point.

Electronics: If this appliance contains electronic parts, please dispose of electrical waste at a recycling collection point for electronic equipment.

APPENDIX: CIRCUIT DIAGRAM

Circuit diagram - Model: 09300228





TECHNICAL DEPARTMENT & WAREHOUSE

NIJVERHEIDSWEG 23A/D - 3641 RP MIJDRECHT - THE NETHERLANDS

☎ +31 (0) 297 253 969

✉ TECHNICAL@MAXIMA.COM