



DOUGH ROLLER

MODEL: SINGLE 32 / 30 CM



SPECIFICATIONS

Power	250 Watt
Connection	230V / 50Hz / 1phase
Nett Weight	18.0 Kg
Gross Weight	22.0 Kg
Machine Dimensions	H430 x W480 x D335 mm
Packaging Dimensions	H500 x W760 x D410 mm
Packaging Volume	0.16 CBM
Packaging Material	Carton Box with Foam
HS Customs Code	84381010
EAN Code	8719324276863
Article Number	08900020

Professional dough rolling machine
Equipped with onerolling pin
Quick and easy roll out
Dough roller with strong engine
Durable and powerful driving mechanism
Engine does not heat the dough
Equipped with 1 speed
Luxury fully stainless steel housing
Protective transparent plastic cover
With safety switch
Separate power button
Adjustable with simple knob
Placed on 2 wide stainless steel feet
Very simple to use
Easy to clean

- 👑 HIGH QUALITY / LOW PRICES
- 👑 24 / 7 SUPPORT & SERVICE
- 👑 IMMEDIATELY AVAILABLE FROM STOCK
- 👑 TECHNICAL DEPARTMENT & WARRANTY
- 👑 EXCELLENT CUSTOMER SATISFACTION



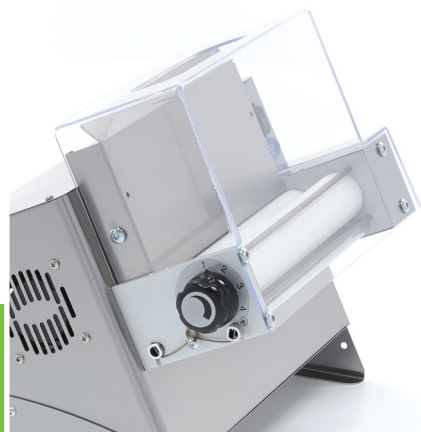
Max. dough weight: 80 - 210 grams
Max. pizza diameter: 14 - 30 cm
Adjustable diameter / thickness: 0.0 - 4.0 mm

Standard included:

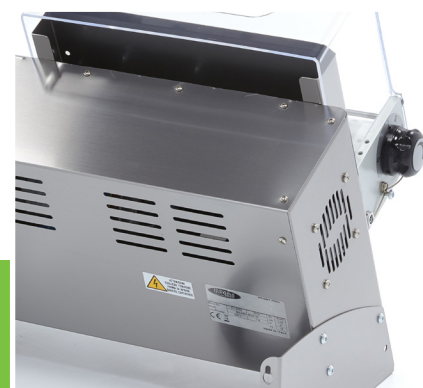
Foot Pedal



Suitable for: Pizza -, Pasta -,
Bread - & Cake Dough



Rolling pin adjustable with simple knob



Durable and powerful drive which does
not heat the dough